

## Community Features

- Garden Areas
- Detached Garages Available
- Covered Postal Center
- Planned Resident Activities
- Large Club House with:
  - Computer Business Center
  - Community Clothes Care Center
  - Fitness Center
  - Full Kitchen
- State of the Art Fitness Center
- Internet Computer Lab and Library
- On site laundry facility
- BBQ Grills with Picnic Tables
- Pet Park
- Beautifully Landscaped Grounds

## Apartment Amenities

- Steel Entry Doors with Doorbell & Peephole
  - Full-Size Washer/Dryer Connections
  - Additional Storage Room on Each Patio
  - Walk-In Closets
  - Beautiful Black Electric Appliances Including:
    - Frost-Free Refrigerator with Ice Maker
    - Range
    - Microwave
  - Granite Counter Tops
  - Faux Wood Flooring
  - Mini-Blinds
  - Large Covered Porch Ceiling Fans in Every Bedroom & Living Room
- \*In select apartments



*Pioneer Crossing*

Sulphur Springs  
Senior Apartment Community



## Planned Resident Activities



**Pet Park!**

Professionally managed by:

**A | B**

**ALPHA BARNES**  
REAL ESTATE SERVICES



**A Senior Apartment  
Community for  
Persons 55 or Better!**

**903.689.7810**

668 Gossett Lane  
Sulphur Springs, TX 75482  
[pioneercrossingsseniors.com](http://pioneercrossingsseniors.com)

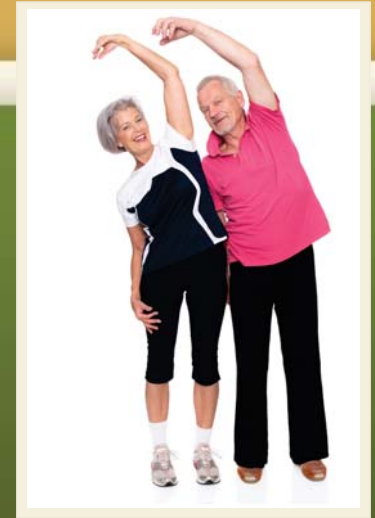


Our community offers 24 hour emergency maintenance and is close to public transportation.

We are located within minutes to shopping and convenient to I-30 and Highway 19. We offer a on site Fitness Center and you can take your pet to our pet park.

Come experience a community that cares about where you live and offers superior customer service. Call or visit TODAY and allow our professional staff find the perfect apartment home for you at Pioneer Crossing.

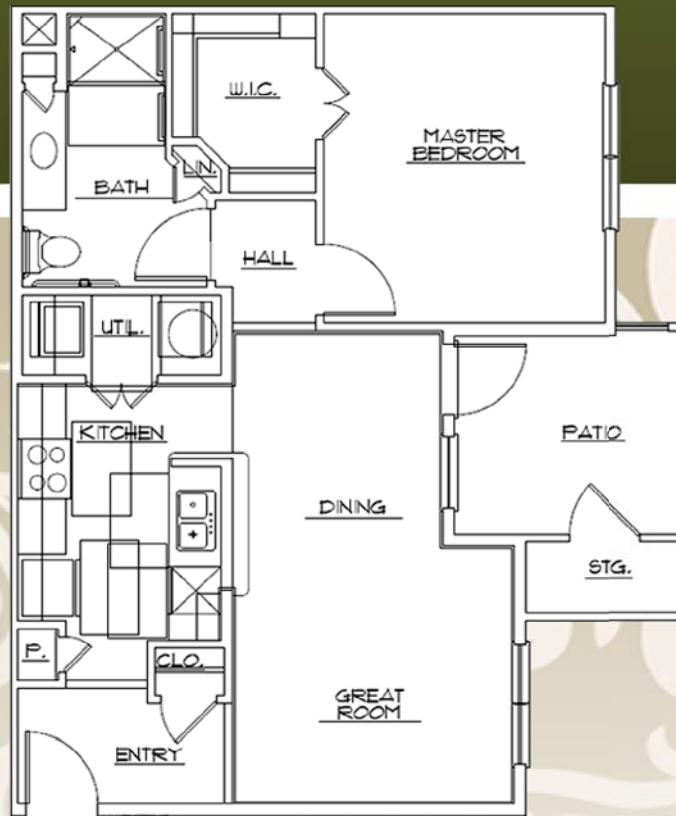
## Fitness Center



**A1 - One Bedroom / One Bath**  
686 Sq. Ft.



**A2 - One Bedroom / One Bath**  
750 Sq. Ft.



**B1 - Two Bedroom / Two Bath**  
938 Sq. Ft.



\*Square footage is approximate